

# AMANO®

## PARKING SOLUTIONS

### RG-900 Designer Series Access Control Gate

#### FEATURES:

- NevRust™ lightweight, durable pedestal
- Concave pillar architectural design
- DC motor direct drive (gear-motor)
- Selectable “Auto-Up” under power failure
- Plug-in vehicle detector
- 12’ Left Hand, 12’ Right Hand and 16’ Left Hand Models
- Swing, sliding or tandem gate lane configurations

The Amano RG-900 Designer Series Gates incorporate a new philosophy in the drive technology. The DC direct drive gear-motor is custom designed for incorporation in all future gate models, and will cover the requirements of both the residential and commercial parking/access control markets.



The RG-900 concave pillar-shaped composite pedestal material is high tensile strength yet lightweight. Supplied in standard White, it may be painted if desired to match architectural color needs.

The new micro-controller provides gate arm variable speed control based on arm length to provide smooth operation from start to stop. Supplied standard is the plugable AGP-0239 Dual Detector. This drive train uses sensors rather than limit switches for position sensing, and offers Gentle-Touch™ safety protection.

Designed for easy installation and simple parallel communications with other access control equipment, the RG-900 Series is the perfect stand-apart choice for simple exit and/or entry access control applications where durability, dependability and good looks count.

*Installations at left show decorative pedestal for architectural symmetry.*

# S P E C I F I C A T I O N S

## ELECTRICAL

120V AC, 60 Hz  
Service amps: 20A (120V, 100V) 10A (240V)  
Connections: One utility power outlet  
Main power field connect box  
Main power switch with built-in circuit breaker  
Field wiring: Removable terminal block assembly  
24V DC unregulated

## MOTOR CHARACTERISTICS

High torque motor: 1/3 hp  
Speed: 3600 rpm 24V DC  
Starting amps: 12A (24V)  
Running amps: 3.5A (24V)  
Brush life: 1 million gate cycles

## GEARBOX CHARACTERISTICS

Gear ratio: 261:1  
Torque rating: 1000 in-lbs.

## BRAKE ON MOTOR CHARACTERISTICS

Voltage: Operating range - 10V to 24V  
Holding force: 2000 in-lbs.

## GATE ARM CHARACTERISTICS

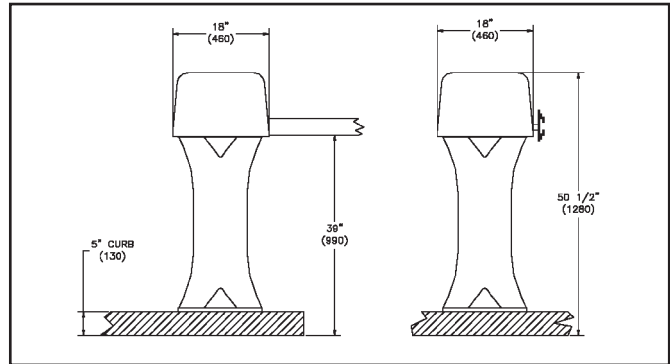
Height: 34" (86 cm) in down position  
Length: **For RG-900 12' Gate only**  
AL12: 12' (365 cm) aluminum  
**For RG-900 16' Gate only**  
AL16: 16' (486 cm) aluminum

## ENVIRONMENT

Temperature: -15°F ~ 130°F (-26°C ~ 54°C)  
Humidity: 10% ~ 90% (non-condensing)

## CABINET

Construction: Composite thermoset material  
Dimensions: 18" x 18" x 45.5"  
(45.72 cm x 45.72 cm x 115.57 cm)  
Weight: 96 lbs. (8.5 Kg)  
Access: Under top cover  
Finish (Std): White



## MICROPROCESSOR-BASED CONTROLLER

Gate up/normal/down switch (internal manual override)

Operational modes:

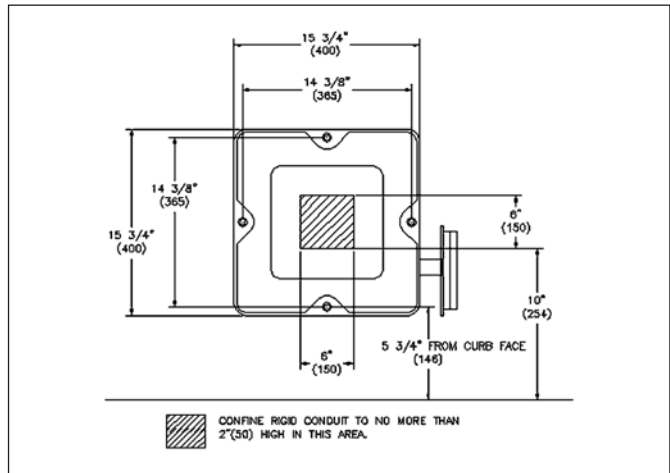
Free Way, One Way, Two Way, Slave, One Way with Auxiliary Gate, Two Way with Auxiliary Gate, Free Way with Auxiliary Gate.

Switch selectable features:

“Extra sensory” timer; Closing loop safety “auto stop”, backout timer

Built-in detector socket will accept single channel (AGP-0139) or dual channel (AGP-0239) vehicle detectors.

Dual channel detector comes standard with the gate.  
A single channel detector may be purchased separately.



Manufactured by Amano Cincinnati, Inc.'s Ohio factory, an ISO 9001:2000 registered facility.  
Specifications are approximate and are subject to change without notice

**REPRESENTED BY:**

 **AMANO  
CINCINNATI®**  
*We Understand Parking*

Atlanta • Chicago • Cincinnati • Dallas  
Los Angeles • New York • Toronto

Corporate Headquarters: 140 Harrison Avenue, Roseland, NJ 07068-1239

**800•526•2559**  
[www.amano.com](http://www.amano.com)